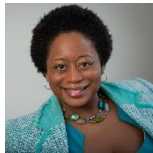


CONVENING SPEAKER DIRECTORY



Delmar M. Algee III, Housing Programs Manager, [Catholic Community Services](#)

Delmar has been a professional in homeless services since 2012. For just over two years, he has been responsible for overseeing the day-to-day operations of various housing programs at Catholic Community Services-Family Housing Network.



Amanda Misiko Andere, CEO, [Funders Together to End Homelessness](#)

Amanda Misiko Andere has spent over fifteen years working in the nonprofit and public sector as a leader committed to racial and housing justice through advocacy for systemic change. Prior to joining Funders Together to End Homelessness as their CEO, she served as the CEO of Wider Opportunities for Women, a national advocacy organization.

Currently, she serves as a board member of the United Philanthropy Forum and Equity in the Center. Amanda is a founding member and on the leadership team for the National Racial Equity Working Group on Homelessness and Housing and the National Coalition for Housing Justice.

Contact: Amanda.Andere@funderstogether.org

Online presence: www.funderstogether.org/amanda_andere



Tabitha Blackwell, Director of Networks and Programs, [Funders Together to End Homelessness](#)

Tabitha Blackwell is a Director of Networks and Programs who works with Funders Together for End Homelessness to support their Communities of Practices and funders regional networks. Most recently, she was Executive Director for Chapel Hill-Carrboro Youth Forward, a funders collaborative that support local organizations helping young people (ages 5-20) develop into career and college-ready citizens by distributing grant funds, providing technical assistance, and facilitating networking opportunities and collaborations. Tabitha earned her Master of Management with a concentration in nonprofit management from the University of Maryland University College. She holds a bachelor's degree in government from Campbell University.

Contact: tabitha@funderstogether.org

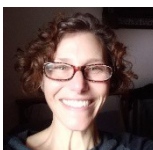
Online presence: www.funderstogether.org/tabitha_blackwell



Mary Jane Brell Vujovic, Director of Human Services, [Snohomish County Human Services Department](#)

Mary Jane Brell Vujovic is the Director of the Snohomish County Human Services Department and has overseen Snohomish County's Family Homelessness Initiative since its inception. Over her 49-year career, she has worked on economic and social justice initiatives in Washington State and overseas. She has a Bachelor of Science in Psychology from the University of Washington and has been honored as Woman of the Year by the Greater Everett Chapter of Business and Professional Women, by Opportunities Industrialization Center of Washington for service in eliminating poverty, and by United Way of Snohomish County as the Adult Volunteer of the Year.

Contact: maryjane.brell@snoco.org



Liza Burell, Program Director, [Building Changes](#)

As Program Director at Building Changes, Liza oversees program areas including: The Family Homelessness Initiative, Schoolhouse Washington, the Washington Youth and Families Fund, and capacity building for nonprofits and government partners. Liza has over 20 years of combined experience in program leadership and administration,

A Decade of Innovation:

Lessons Learned from the Puget Sound Family Homelessness Initiative

BILL & MELINDA
GATES foundation

consulting, and direct service experience in the homeless housing system, homeless youth and young adult services and the workforce arena. She joined Building Changes in 2012, was previously the Director of Workforce Education at Bellevue College, and has over nine years' experience working at YouthCare in Seattle. She received her MSW from the University of Washington.

Contact: liza.burell@buildingchanges.org

Online presence: www.linkedin.com/in/LizaBurell



D'Artagnan Caliman (He/Him/His), Director, Justice Oregon for Black Lives, [Meyer Memorial Trust](#)

D'Artagnan Caliman is currently Director for the Justice Oregon for Black Lives initiative at Meyer Memorial Trust. Formerly, Caliman served as Executive Director of Building Changes. Caliman has led organizations in addressing disproportionate outcomes for marginalized communities in relation to the homeless, juvenile justice, and child welfare systems. Caliman, himself, is a former alum from foster care and experienced homelessness as a child.

Contact: dcaliman@mmt.org

Online presence: www.linkedin.com/in/d-artagnan-caliman-he-him-3130562



Gregg Colburn, Assistant Professor, [University of Washington](#), College of Built Environments, Department of Real Estate

Gregg Colburn is an assistant professor in the Runstad Department of Real Estate at the University of Washington. Gregg conducts research on a range of topics, including housing policy, housing markets, housing affordability, and homelessness. His research has been published in leading journals such as Urban Studies, Urban Affairs Review, Housing Studies, and Housing Policy Debate. Gregg is the author of an upcoming book entitled, Homelessness is a Housing Problem (under contract with University of California Press). Gregg is active in the Puget Sound region working with community partners such as the Bill & Melinda Gates Foundation, King County, Bellwether Housing, and Sound Communities. He earned an M.B.A. from Northwestern University, a M.S.W. from the University of Minnesota, and a Ph.D. in public policy from the University of Minnesota's Humphrey School of Public Affairs.

Contact: colburn3@uw.edu

Online presence:

- **LinkedIn:** www.linkedin.com/in/greggcolburn/
- **Twitter:** @ColburnGregg



Shanee Colston, Behavioral Health Case Manager

Shanee looks after her clients' best interests and inspires hope in those who have none. She also works on and coordinates with a multidisciplinary team implementing Housing First and harm reduction practices, as well as helps to eliminate the stigma and barriers that present themselves with clients in similar situations facing similar challenges, ones she once overcame in the past or is currently working on now. Shanee chooses to work with the most marginalized, vulnerable and underserved single men and women 18 and older in King County.



Marc Dones (they/them), Executive Director, [National Innovation Service](#)

Marc Dones is a social entrepreneur, policy strategist, and social justice activist with 10+ years of experience in equitable systems transformation across local, state, and federal governmental systems. Prior to launching NIS, Marc held various roles in social impact, specializing in policy, program design, and continuous improvement.

A Decade of Innovation:

Lessons Learned from the Puget Sound Family Homelessness Initiative

BILL & MELINDA
GATES foundation

This includes leadership roles at The Future Company and Center for Social Innovation (C4). Outside of direct systems transformation, Marc is a faculty member at the School of Visual Arts (SVA) and leverages their experience as a keynote & panelist. Marc holds a B.A. from NYU in Psychiatric Anthropology and is a highly-qualified equity trainer.

Contact: marc@nis.us

Online presence:

- **Twitter:** @marcformarc



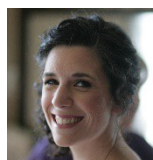
Colleen Echohawk, Executive Director, [Chief Seattle Club](#), Founder of the National Coalition to End Urban Indigenous Homelessness

Colleen Echohawk is an enrolled member of the Kithehaki Band of the Pawnee Nation and a member of the Upper Athabascan people of Mentasta Lake.

As the founder of the National Coalition to End Urban Indigenous Homelessness, Echohawk is committed to homeless advocacy and changing the trajectory of Native American and Alaska Native people living away from reservations in urban places and experiencing homelessness. Echohawk is interested in creating systems and structures that help facilitate wellness, and encourage kindness and courage. Recognizing a lack of equity in housing design and development, and the profound impact that this can have on the well-being of people of color, Echohawk has turned her focus to equitable low-income housing development and indigenous-led design.

Under Echohawk's leadership, Chief Seattle Club received the Puget Sound Sage Visionary for Justice Award (2019), Seattle Community Law Center's Equity Award (2018), the Neighborhood Builder Award (2017), and Municipal League of King County's Organization of the Year (2016).

Contact: Colleen@chiefseattleclub.org



Anne Marie Edmunds, Program Specialist 3, [Pierce County Human Services](#)

Anne Marie Edmunds puts her energy, love for efficiency and problem-solving, and management degree to work every day as the lead staff responsible for implementing change in the homeless crisis response system of Pierce County, WA. The best advice she has received related to this work is "Change is messy and it's never perfect, but don't let that stop you." She's been in the messy trenches of systems change since 2012.

Contact: annemarie.edmunds@piercecountywa.gov



Lisa Gustaveson, (Formerly) Program Manager, [Seattle University Faith & Family Homelessness Project](#), (Currently) Strategic Advisor, [City of Seattle Human Services Department, Homeless Strategy & Investment](#)

Lisa Gustaveson directed three grants from the Bill & Melinda Gates Foundation for Seattle University's Faith & Family Homelessness (FFH) Project. The team of staff, faculty and graduate research students created and piloted a community engagement model where people of faith deepened their understanding of the problem of homelessness, affordable housing and poverty, created stronger congregational commitments to maximize their response, and established innovative faith-based solutions. Lisa has 20+ years of experience working on local and regional homeless responses, and is currently a Strategic Advisor for the City of Seattle's Homeless Strategy & Investment Division.

Contact: lisagustaveson@gmail.com; lisa.gustaveson@seattle.gov

Online presence: www.linkedin.com/in/lisagustaveson



Dr. Kathryn Henderson, Principal Research Associate, [Westat](#)

Dr. Kathryn Henderson is a Principal Research Associate at Westat with 20 years of experience conducting research and evaluations on homeless service delivery systems, housing, employment programs, and health initiatives for individuals and families living in

A Decade of Innovation:

Lessons Learned from the Puget Sound Family Homelessness Initiative

BILL & MELINDA
GATES foundation

poverty. She has served as the Project Manager for the Family Homelessness Systems Initiative Evaluation since 2009. She is also currently managing a cross-site evaluation of the U.S. Department of Housing and Urban Development's Youth Homelessness Demonstration Program. Dr. Henderson received her PhD in Sociology from Indiana University.



Vicci L. Hilty, Executive Director, [Domestic Violence Services of Snohomish County](#)

Vicci Hilty serves as Executive Director for Domestic Violence Services Snohomish County (DVS) where she has been employed for 19 years. Vicci graduated Summa Cum Laude with a B.A. in General Studies and a minor in Business Administration. She has 40+ years of marketing and public relations experience, 33 of those focused in development work and administration for non-profit organizations throughout Puget Sound. She is actively involved in her community by currently participating as: Board Member-Community Foundation Snohomish County, Board Member-Volunteers of America Western Washington, Executive Committee and Public Policy Committee Chair-Snohomish County Partnership to End Homelessness, Local Board Member Emergency Food and Shelter Program (FEMA), active member Human Services Executives of Snohomish County, Past President Everett Port Gardner Rotary and participating member of multiple Chambers of Commerce in Snohomish County.

Contact: vicci@dvs-snoco.org



Catherine Hinrichsen, (Formerly) Project Director, [Seattle University's Project on Family Homelessness](#); (Currently) Program Communications Supervisor, [Washington State Department of Health](#)

Catherine Hinrichsen, APR is a communications professional who led day-to-day operations of Seattle University's Project on Family Homelessness for 10+ years until its conclusion in August 2020. The project used journalism, art and storytelling to engage the community in solving family homelessness. Catherine led a team of SU students who served as a pro-bono communications firm for nonprofit partners, creating data visualizations, promotional materials, branding, special events and more. The project worked closely with its "sister projects" on campus, Faith & Family Homelessness and Film & Family Homelessness. She recently joined the Washington State Department of Health as a communicator.

Contact: chinrichsen@seanet.com

Online presence: www.linkedin.com/in/catherinehinrichsen/

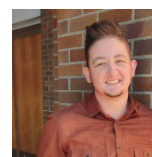


Katie Hong, Director, Special Initiatives, [Raikes Foundation](#)

Katie Hong is the Director for Special Initiatives at the Raikes Foundation where she is currently leading the effort to refine the Foundation's strategy areas. She joined the Raikes Foundation in 2012 where she led the Foundation's efforts to prevent and end unaccompanied youth and young adult homelessness.

Katie has worked in the philanthropic, non-profit and government sectors for over 25+ years working on efforts to change systems and conditions that advance equity and social justice. Katie's experience includes leading the work of the Pacific Northwest Initiative at the Bill & Melinda Gates Foundation and serving as the Director for the City of Seattle's Office of Housing. She's also served as senior policy advisor to Governor Gary Locke and Seattle Mayor Greg Nickels.

Contact: katie.hong@raikesfoundation.org



Jesse Jorstad (he/him), Associate, [Abt Associates](#)

Jesse Jorstad has over 12 years of experience working to end homelessness. An early and enthusiastic champion of the opportunities afforded by the partnership between Snohomish County and the Bill & Melinda Gates Foundation, Jesse spent 8 years leading the charge with powerful, impactful visualizations. Paired with his dynamic

A Decade of Innovation:

Lessons Learned from the Puget Sound Family Homelessness Initiative

BILL & MELINDA
GATES foundation

presentation style, Snohomish County was recognized for their work on a national level including as a Community Spotlight by HUD. Jesse recently joined Abt Associates, a national technical assistance provider and is eager to bring the lessons learned from the Data-Driven Culture Initiative to communities across the country.

Contact: jessejconsulting@outlook.com

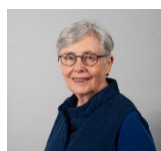


Chris Ko, Vice President, Impact & Strategy, [United Way of Greater Los Angeles](https://www.unitedwayla.org)

Chris Ko serves as Vice President of Impact & Strategy for the United Way of Greater Los Angeles, overseeing all its mission-based efforts in housing, homelessness, education, and economic mobility. In his time there, he crafted the community coalitions to create and pass historic ballot measures around housing (HHH), homelessness (H), and racial justice (J). He also led the architecture of the Coordinated Entry System, which went onto become a national model after boosting priority housing placements by over 500%. Previously, he also served as an officer at an after-school program in West Philadelphia and helped design Bank on LA for Mayor Villaraigosa, which went on to bring 10,000+ low-income Angelenos into the financial mainstream.

Contact: cko@unitedwayla.org

Online Presence: www.linkedin.com/in/chrisjinko/



Dr. Jill Khadduri, Principal Associate, [Abt Associates](https://www.abtassociates.com)

Dr. Jill Khadduri focuses on the relationship between housing policy and homelessness. As a Principal Associate at Abt Associates, she is part of the Family Options Study research team and co-principal investigator for the Annual Homeless Assessment Report. Dr. Khadduri is the founding director of Abt's Center for Evidence-based Solutions to Homelessness and a member of the Research Council of the National Alliance to End Homelessness. She is co-author, with Marybeth Shinn, of a comprehensive assessment of homelessness, *In the Midst of Plenty: homelessness and what to do about it*.

Contact: jill_khadduri@abtassoc.com

Online Presence: www.evidenceonhomelessness.com/experts/



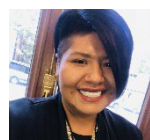
Dr. Gabriela López-Zerón, Associate Director, Research Consortium on Gender-Based Violence (RCGV), Director of RCGV Linguistic Justice Division, [Michigan State University](https://www.msu.edu)

Dr. Gabriela López-Zerón is an Associate Director for Michigan State University's Research Consortium on Gender-Based Violence (RCGV), and Director of the Consortium's Linguistic Justice Division.

She is committed to increasing the access and cultural relevance of evidence-based treatments and supportive services for survivors, particularly among ethnic minority and immigrant communities. She is committed to integrating language justice principles throughout the research process. Her current work is focused on the evaluation of innovative housing models and services for survivors of domestic violence and their families.

Contact: lopezga3@msu.edu

Online Presence: vaw.msu.edu/people/lopez-zeron-gabriela/



Donalda Lyons (Akimel O'odham/ Tohono O'odham), Housing Program Manager, [Chief Seattle Club](https://www.chiefseattleclub.org)

Donalda is the Housing Program Manager for Chief Seattle Club. She was the first Site Manager for Eagle Village; Eagle Village is Chief Seattle Club's first bridge shelter. She also was the first family case manager that worked with the Native American Families in Mary's Place Shelter. She has worked with Chief Seattle Club for the past 3 years. Donalda is a graduate of Arizona State University with a BS in Criminal Justice Criminology and a minor in Social Work.

Contact: donalda@chiefseattleclub.org

A Decade of Innovation:

Lessons Learned from the Puget Sound Family Homelessness Initiative

BILL & MELINDA
GATES foundation



Gordon McHenry, Jr., President & CEO, [United Way of King County](#)

Gordon McHenry, Jr. is the president & CEO of United Way of King County. United Way works to ensure people in King County have homes, students graduate, and families are financially stable.

McHenry, a lifetime resident of King County has served on a variety of boards and currently serves as Chair of the Washington State Partnership Council on Juvenile Justice, member of the King County Regional Homelessness Authority Implementation Board, the Seattle Metropolitan Chamber of Commerce, and Mountains to Sound Greenway Trust.



Christina McHugh, Housing and Homelessness Evaluation Manager, [King County Department of Community and Human Services](#)

Christina McHugh is the Housing and Homelessness Evaluation Manager at King County's Department of Community and Human Services. Christina leads the County's efforts to study the effectiveness of King County's regional homeless response system,

homelessness prevention programs, affordable housing policy and programs, and COVID-19 response. She has more than a decade of experience evaluating social programs, including studies for the Washington Department of Social and Health Services, U.S. Department of Labor, and U.S. Department of Health and Human Services. Christina holds a Master of Public Policy and a master's degree in political science from the University of Maryland, College Park.

Contact: cmchugh@kingcounty.gov



Kollin Min, Senior Program Officer, [Bill & Melinda Gates Foundation](#)

Kollin Min is a Senior Program Officer at the Bill & Melinda Gates Foundation for the Pacific Northwest initiative in the United States Program where he leads the foundation's family homelessness initiative. Prior to joining the foundation, he served as the Seattle/Washington State Director for Enterprise Community Partners Inc., a national nonprofit housing intermediary. Kollin is an attorney with more than 20 years of experience in the nonprofit, governmental, and private sectors. He received his law degree from the University of Washington, a master's degree in environmental policy from Lund University in Sweden and a B.A. in political science from Yale College.

Contact: kollin.min@gatesfoundation.org

Online presence: local.gatesfoundation.org/team_member/kollin-min-senior-program-officer/

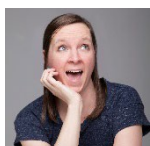


Emily Mirra, Senior Manager, Grantmaking and Capacity Building, [Building Changes](#)

Emily Mirra is a Senior Manager of Grantmaking and Capacity Building at Building Changes. She provides capacity building and technical assistance to public sector entities, nonprofit providers, and other partners in areas that support key strategies to addressing disparities in family homelessness. Emily has over ten years of experience in community engagement, training, facilitation, curriculum design, and program development. Prior to joining Building Changes, she worked as an adult educator in immigrant and refugee community-based organizations. Emily is a certified ESL instructor and received her B.A. from Vassar College. She is from Tacoma, WA.

Contact: Emily.Mirra@BuildingChanges.org

Online presence: www.linkedin.com/in/emily-mirra-82317265/



Alyson Moon, Director of Community Impact, [Mary's Place](#)

Alyson is the Director of Community Impact for Mary's Place, where she began work in the homeless service community back in 2013. She is responsible for Mary's Place community impact agenda that identifies gaps in policies and services and affects change at the systems level in collaboration with government, family shelter providers, school districts,

A Decade of Innovation:

Lessons Learned from the Puget Sound Family Homelessness Initiative

BILL & MELINDA
GATES foundation

and community partners. She is dedicated to seeing an end to family homelessness in this community through the centering of those most impacted and loves working with others to come to collaborative and creative solutions.

Contact: alyson@marysplaceseattle.org

Online presence: www.marysplaceseattle.org/our-team



Joy Moses, Director of Homelessness Research Institute, [National Alliance to End Homelessness](http://NationalAllianceToEndHomelessness.org)

Joy Moses is the Director of the Homelessness Research Institute. For over 15 years, she has worked to reduce poverty and advance racial justice. Before joining the Alliance, she was a private consultant and analyst with the Center for American Progress. Within those roles, she managed projects and developed research reports and other forms of analysis. Joy began her career as a legal advocate, representing the interests of children and youth through her work at the National Law Center on Homelessness & Poverty and the NAACP Legal Defense Fund. She is a graduate of Georgetown University Law Center and Stanford University.

Contact: jmoses@naeh.org



Nawiishtunmi Nightgun, Director of Housing, [Wellspring Family Services](http://WellspringFamilyServices.org)

Nawiishtunmi Nightgun is an enrolled member of the Confederated Tribes and Bands of the Yakama Nation. She is a descendant of the Blackfeet and Gros Ventre tribes. Nawiishtunmi leads Wellspring's housing department with culturally relevant services that meet the needs of all families experiencing homelessness. As Vice President on the Mockingbird Society's Board of Directors, she supports ending youth homelessness. She has also served as Co-Chair of the CEA Public Policy Committee, and as an Indian Policy Advisory Committee Delegate for Washington State as a tribal leader. A vocal advocate for ending homelessness and racial equity, she has presented on decolonizing colonialism, decolonizing data, and addressing the needs of our community during the pandemic in collaboration with the regional public health agency. Nawiishtunmi has pushed for King County to add tribal designations to its HMIS database for thousands of indigenous people experiencing homelessness. Nawiishtunmi received her Bachelors of Science in Psychology and is actively pursuing her master's degree in Mental Health with an emphasis in trauma.

Contact: nnightgun@wellspringfs.org

Online presence: wellspringfs.org/about-us/leadership



Linda Olsen, Housing Director, [Washington State Coalition Against Domestic Violence](http://WashingtonStateCoalitionAgainstDomesticViolence.org)

Linda Olsen is the Housing Project Director with the Washington State Coalition Against Domestic Violence. She oversees the Domestic Violence Housing First project, now starting its 12th year. This project has evolved into a five-year demonstration and research project. Linda has worked in the field of domestic violence for 35 years, serving in the

roles of shelter director and executive director at two domestic violence agencies. She currently serves on the Washington State Advisory Council on Homelessness. Linda has two graduate degrees: one in theology and one in social work.

Contact: linda@wscadv.org

A Decade of Innovation:

Lessons Learned from the Puget Sound Family Homelessness Initiative

BILL & MELINDA
GATES foundation



Annie Pennucci, Director of Impact & Evaluation, [King County Housing Authority](#)

Annie Pennucci, M.P.A., is the Director of Impact & Evaluation at the King County Housing Authority. She previously directed research efforts at Building Changes and the Washington State Institute for Public Policy. Annie has two decades of experience in applied research in government and nonprofit settings, covering a range of public policy topics including housing, homelessness, education, children's services, employment, and behavioral health.

Contact: anniep@kcha.org

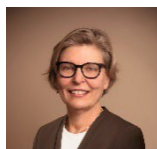
Online presence: [linkedin.com/in/annie-pennucci-46b59a](https://www.linkedin.com/in/annie-pennucci-46b59a)



Dr. Debra Rog, Vice President, [Westat](#) and President, [Rockville Institute](#)

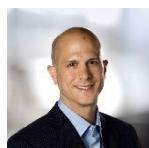
Dr. Debra Rog has over 30 years of experience evaluating housing and homelessness interventions and systems. Her current and recent work in homelessness, in addition to the evaluation of the Family Homelessness Systems Initiative, includes evaluations of HUD's Youth Homelessness Demonstration Initiative, rapid re-housing and permanent supportive housing in Los Angeles, and supportive housing for families in Washington State. She currently serves on the Research Council of the National Alliance to End Homelessness. A respected and well-known evaluation methodologist, Dr. Rog is an Associate Director of The Evaluators' Institute and a past president of the American Evaluation Association.

Contact: debrarog@westat.com



Nan Roman, President and CEO, [National Alliance to End Homelessness](#)

Nan Roman, President and CEO of the National Alliance to End Homelessness, is a leading national voice on the issue of homelessness. The Alliance is a national nonprofit, nonpartisan organization whose sole mission is preventing and ending homelessness. Under Ms. Roman's direction, the Alliance seeks to achieve its mission through research, federal policy, and capacity building. It works with thousands of partner organizations and agencies across the nation.



Juan Sanchez, Ph.D., Senior Program Officer, Research, Measurement & Evaluation, [Bill & Melinda Gates Foundation](#)

Juan Sanchez is a Research, Measurement, and Evaluation Senior Program Officer for the United States Program (USP) at the Bill & Melinda Gates Foundation. Juan leads the research, development and implementation of research, measurement, evaluation and learning activities for the Washington State Initiative and two USP focus areas: Family Homelessness and Washington State Charters. Previously at the Foundation, Juan served as a Research Analyst for the President of USP, where he supported the President and his Chief of Staff across the full scope of the President's work.



Marie Sauter, Senior Program Officer, [Bill & Melinda Gates Foundation](#)

Marie Sauter is a Senior Program Officer for the Washington State Strategy of the Bill & Melinda Gates Foundation – with a portfolio supporting student wellness and connection to build more equitable learning environments in and out of school. Marie's portfolio also includes a statewide network focused on supporting community philanthropy to increase community engagement. Before joining the foundation in 2006, Marie worked in local philanthropy and nonprofit management. She's a graduate of Pomona College, and of Seattle University's Master of Nonprofit Leadership Program.

Contact: marie.sauter@gatesfoundation.org

Online presence: local.gatesfoundation.org/team_member/marie-sauter-senior-program-officer/

A Decade of Innovation:

Lessons Learned from the Puget Sound Family Homelessness Initiative

BILL & MELINDA
GATES foundation



Joseph Seia, Executive Director, [Pacific Islander Community Association](#)

Joseph Seia was born in Los Angeles, grew up on Tutuila and Upolu islands with his 'āiga in Sāmoa and eventually emigrated to Duwamish/Coast Salish Territory with his father Aitulagi Iosefa and his siblings in 1994. He has 15 years of experience in direct service & youth development work, antiracist-community organizing, nonprofit leadership and administration. Joseph champions systems change work the centers the leadership and history of most impacted communities. He is committed to reducing and ending the impacts of systemic racism on the lives of Indigenous, Black and Brown communities, through coalition building, centering anti-racism, creating inter-generational leadership opportunities and working with BIPOC communities to co-design our vision of Beloved Community. Joseph is Fa'afafine – he is a fierce advocate for QTBIPOC communities. He is critically concerned with political systems that cripple or erase the voice and leadership of NHPI communities and will continue to provide soul labor in re-envisioning what it means for NHPI families to feel belonging and establish cultural home within the State of Washington.

Contact: joseph@picawa.org

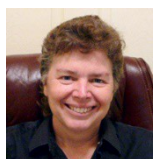
Online presence: www.picawa.org/meetourteam/



Dr. Matt Smith, Homeless Student Stability Program Supervisor, [Office of Superintendent of Public Instruction \(OSPI\)](#)

Dr. Matt Smith serves as the Homeless Student Stability Program (HSSP) Supervisor for the State of Washington, Office of Superintendent of Public Instruction (OSPI). He manages the competitive HSSP grant which prioritizes support for students of color experiencing homelessness, unaccompanied homeless youth, and community partnerships. Matt is a student advocate with 15 years of experience in public education, including K-12 teaching and college student support services. Matt previously served as Director of CASA/MECA at Tacoma Community College supporting students facing systemic and structural barriers to access and success in higher education.

Contact: matt.smith@k12.wa.us

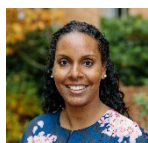


Dr. Cris Sullivan, Professor, [Michigan State University](#)

Dr. Cris Sullivan is the Director of the Research Consortium on Gender-based Violence and Professor of Ecological/Community Psychology at Michigan State University. She is also the Senior Research Advisor to the National Resource Center on Domestic Violence. Cris has been an advocate and researcher in the movement to end gender-based violence since 1982. Her areas of expertise include developing and rigorously evaluating community interventions for domestic violence survivors and their children and evaluating victim services. Her most recent focus has been on rigorously examining models designed to help survivors obtain safe and stable housing.

Contact: sulliv22@msu.edu

Online presence: vaw.msu.edu/people/sullivan/



Mehret Tekle-Awarun, Senior Manager, Education Strategy, [Building Changes](#)

Mehret Tekle-Awarun is the Senior Manager of Education Strategy at Building Changes, a statewide agency that works across systems to advance equitable responses that address housing and education crises experienced by children, youth, and families. Mehret transforms ideas into action, fostering the supportive relationships and healthy environments needed to improve student centered services for the more than 40,000 students experiencing homelessness in Washington.

Contact: Mehret.Tekle@buildingchanges.org

Online presence:

- www.linkedin.com/in/mehretteklearun/
- www.psesd.org/about-psesd/board-of-directors

A Decade of Innovation:

Lessons Learned from the Puget Sound Family Homelessness Initiative

BILL & MELINDA
GATES foundation



Triina Van, M.P.P (she/her/hers), Arlington County Housing Assistance Bureau Homeless Services Coordinator, [Arlington 10 Year Plan to End Homelessness](#)

Triina Van is the Continuum of Care (CoC) Coordinator for Arlington County in Virginia. Prior to relocating, Triina worked at All Home, the Seattle-King County, WA CoC for the past ten years where she provided leadership to the local Family Homelessness Initiative efforts, CoC activities, capacity building, and addressing racial disparities. Her background includes serving as a Director of a family emergency shelter, providing services to domestic violence survivors, and residential support for people living with severe and persistent mental illness. She holds a Masters in Public Policy from American University.

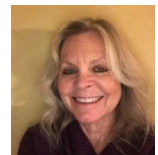
Contact: tvan@arlingtonva.us

Online presence: www.linkedin.com/in/triina-van/



Dr. Clara Wagner, Research Associate, [Westat](#)

Dr. Clara Wagner is a Research Associate at Westat with 15 years of experience in research design and evaluation, including evaluations of service delivery systems for adults and youth experiencing homelessness. She has served as the lead analyst for the Family Homelessness Systems Initiative Evaluation since 2016. She recently managed two evaluations of initiatives in Los Angeles County to expand rapid re-housing and permanent supportive housing services for multiple populations. She completed a postdoctoral fellowship in health services research at the Philadelphia VA Medical Center's Center for Health Equity Research and Promotion and received her PhD in developmental psychology from Temple University.



Ginny Ware, Home Safe Program Director, [New Beginnings](#)

Ginny has worked at New Beginnings in Seattle for over 30 years, spanning the roles of Shelter Advocate, Shelter Program Manager, Transitional Housing Program Manager and currently Home Safe Program Director. During those three decades, Ginny has seen how the approach to working with survivors has evolved in our gender-based violence community, our work becoming more trauma-informed, more focused on racial equity and more committed to acknowledging housing as a social justice issue. Ginny feels grateful to have had the privilege of working with the Bill & Melinda Gates Foundation not only with the Domestic Violence Housing First Project but also the Family Advocacy Project.

Contact: gware@newbegin.org



David M. Wertheimer, Adjunct Professor, [Seattle University](#); Activist Retiree

David M. Wertheimer, M.S.W., M.Div., worked in the non-profit, government, educational and philanthropic sectors for four decades. In May of 2019, he retired after almost 13 years at the Bill & Melinda Gates Foundation, where he most recently was Director of Community and Civic Engagement. He previously served as Deputy Director for the Pacific Northwest Initiative, overseeing the foundation's work in family homelessness.

David is a member of the Adjunct Faculty at the Seattle University School of Theology and Ministry. He serves on several non-profit boards, including the National Association of Drug Court Professionals, Haverford College, Building Changes and the Book Club of Washington. He is Editor of The Journal of The Book Club of Washington.

Contact: dwertheimer@seattleu.edu; quemesguy@gmail.com

Online presence: [@DavidWSeattle](https://www.linkedin.com/in/david-wertheimer-7ab7976/); www.linkedin.com/in/david-wertheimer-7ab7976/

A Decade of Innovation:

Lessons Learned from the Puget Sound Family Homeless Initiative

BILL & MELINDA
GATES foundation



Tyra Williams, SPS Student Supports-Manager, [Seattle School District #1](#)

Tyra Williams, a native of Seattle, received her B.A. in Human Services from Western Washington University, Masters in Education, School Guidance and Counseling from City University, and her Masters in Educational Leadership from the University of Washington, Danforth program. She has been with the Seattle School District since 1996 where she works as the District Manager. In her role as a District Manager, she manages the implementation of Attendance policy and practice, and provides oversight to the McKinney-Vento, Family Support, and Out-of-Home Care Programs. She is also responsible for supervising the current McKinney-Vento Liaison, Family Support Manager, and manages a team of 7 Central Office staff who provide educational support services to families experiencing housing instability and assist schools with implementation of current attendance practices. Prior to Tyra's current role, she served as SPS's McKinney-Vento Program Manager for the past 4 years strengthening systems of support to ensure students experiencing homelessness are identified, understand their educational rights under the law, receive financial support, and educational guidance to fully participate in school.

Contact: twilliams@seattleschools.org



Heather Worthington, Principal, Worthington Advisors LLC; Interim Community Development Director, [City of Bloomington, MN](#)

As the founder and principal of Worthington Advisors LLC, Heather brings 20 years of leadership in local government organizations, including most recently as Interim Community Development Director in Bloomington, MN. As Director of Long Range Planning in Minneapolis, her team led the creation, engagement, and policy adoption of the Minneapolis 2040 Comprehensive Plan. Worthington Advisors is a consultancy focused on governance and policy advising, recruitment and retention work with teams, and land use and strategy guidance all through a racial equity lens.

Contact: worthingtonadvisors@gmail.com



Daniel Zavala, Interim Executive Director, [Building Changes](#)

Originally from Washington State, Daniel Zavala started his career as a bilingual special education teacher after getting his bachelor's and master's from Stanford University. His path to policy work was shaped by his parents' backgrounds in education, public health, and social justice. After earning his law degree at the University of Washington, he focused on education issues while working with education groups and the Washington State Attorney General's Office in the Education Division. After law school, Daniel worked for 50CAN on state-level policy, serving as a deputy director in Tennessee, before returning to his hometown of Seattle to serve as the director of policy and government relations at League of Education Voters. He is currently the interim executive director at Building Changes, a nonprofit working to end youth and family homelessness.

Contact: Daniel.Zavala@BuildingChanges.org

Online presence: www.buildingchanges.org/staff